

Heavy & Medium Duty Trucks & Trailers

# DIN 5151 SERIES

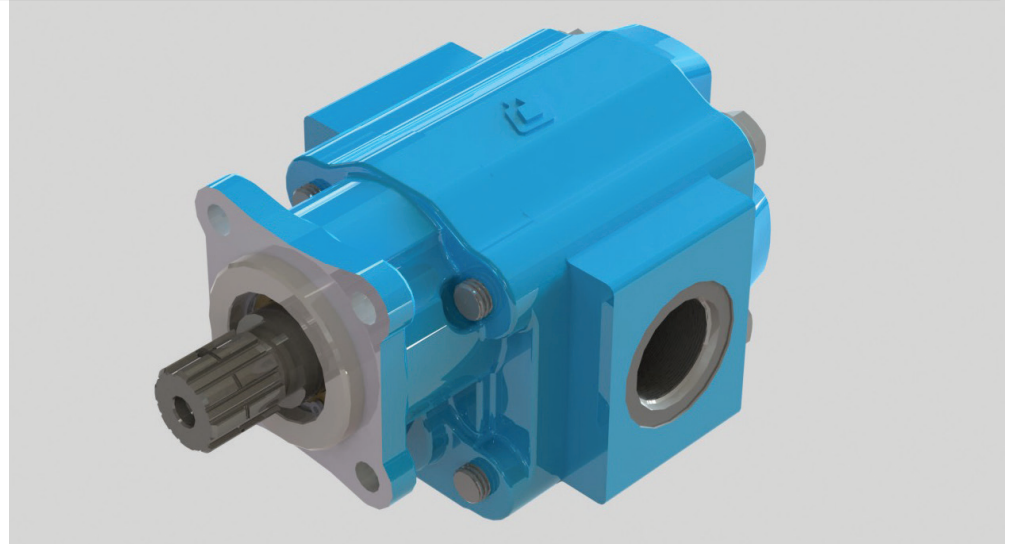
Precision-Engineered Fluid Power Products

The Sensible Choice for Pumps & Motors



Car Haulers  
Dump Trucks  
Crane Equipment  
Vehicles  
Roll Off Trucks  
Refuse Collection  
Snow Plows &  
Spreaders  
Walking Floor

**DDKS**  
INDUSTRIES **.com**



## Features

- ISO 7653 4 bolt flange mount Ø80 mm pilot
- DIN 5462 - 8 x 32 x 36 spline shaft
- Dual Ported - Standard 1-1/2" NPT rear ports and up to 1-1/2" NPT side ports
- Pressure balanced wear plates maintain high pump efficiency throughout all operating ranges
- Bi-Rotational Pump/Motor designed to fit a wide variety of applications
- Doweled and high strength cast iron construction
- High strength alloy steel gear and shaft sets
- NPT & SAE ports are available
- Cubic inch displacements from 3.86 through 7.07
- Maximum pressure up to 3000 PSI
- Speeds to 2400 RPM
- 100% factory tested

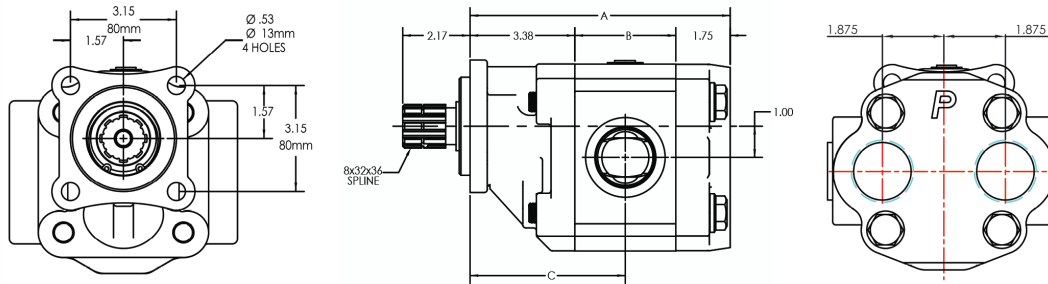


With Permco, it's personal



# Pumps & Motors

## Dimensional Data (inches)



## Product Information

### Pump

Model #	A	B	C	Displ Cu.In	Theo. GPM 1000 RPM	NPT Ports Side	NPT Ports Rear	Max RPM*	Cont. PSI	Max PSI
P5151C551AAXE15-5	7.38	2.25	4.50	3.86	17	1	1-1/2	2400	2500	3000
P5151C551AAXK17-5	7.63	2.50	4.63	4.50	19	1-1/4	1-1/2	2400	2500	3000
P5151C551AAXK20-5	7.88	2.75	4.75	5.15	23	1-1/4	1-1/2	2400	2250	2500
P5151C551AAXQ22-5	8.13	3.00	4.88	5.70	25	1-1/2	1-1/2	2000	2250	2500
P5151C551AAXQ25-5	8.38	3.25	5.00	6.43	27	1-1/2	1-1/2	1800	2250	2500
P5151C551AAXQ27-5	8.63	3.50	5.13	7.07	30	1-1/2	1-1/2	1800	2000	2000

Model #	A	B	C	Displ Cu.In	Theo. GPM 1000 RPM	SAE Ports Side	SAE Ports Rear	Max RPM*	Cont. PSI	Max PSI
P5151C551NMZE15-5	7.38	2.25	4.50	3.86	17	1	1-1/4	2400	2500	3000
P5151C551NMZK17-5	7.63	2.50	4.63	4.50	19	1-1/4	1-1/4	2400	2500	3000
P5151C551NMZK20-5	7.88	2.75	4.75	5.15	23	1-1/4	1-1/4	2400	2250	2500
P5151C551NMZQ22-5	8.13	3.00	4.88	5.70	25	1-1/2	1-1/4	2000	2250	2500
P5151C551NMZQ25-5	8.38	3.25	5.00	6.43	27	1-1/2	1-1/4	1800	2250	2500
P5151C551NMZQ27-5	8.63	3.50	5.13	7.07	30	1-1/2	1-1/4	1800	2000	2000

\* Maximum Inlet Vacuum 5 In. Hg.

### Motor

Model #	A	B	C	Displ Cu.In	Theo. GPM 1000 RPM	NPT Ports Side	NPT Ports Rear	Max RPM	Cont. PSI	Max PSI
M5151C751AAXE15-5	7.38	2.25	4.51	3.86	17	1	1-1/2	2400	2500	3000
M5151C751AAXK17-5	7.63	2.50	4.63	4.50	19	1-1/4	1-1/2	2400	2500	3000
M5151C751AAXK20-5	7.88	2.75	4.75	5.15	23	1-1/4	1-1/2	2400	2500	3000
M5151C751AAXQ22-5	8.13	3.00	4.88	5.70	25	1-1/2	1-1/2	2400	2500	3000
M5151C751AAXQ25-5	8.38	3.25	5.00	6.43	27	1-1/2	1-1/2	2400	2500	3000
M5151C751AAXQ27-5	8.63	3.50	5.12	7.07	30	1-1/2	1-1/2	2400	2500	2500

Model #	A	B	C	Displ Cu.In	Theo. GPM 1000 RPM	SAE Ports Side	SAE Ports Rear	Max RPM	Cont. PSI	Max PSI
M5151C751NMZE15-5	7.38	2.25	4.50	3.86	17	1	1-1/4	2400	2500	3000
M5151C751NMZK17-5	7.63	2.50	4.63	4.50	19	1-1/4	1-1/4	2400	2500	3000
M5151C751NMZK20-5	7.88	2.75	4.75	5.15	23	1-1/4	1-1/4	2400	2500	3000
M5151C751NMZQ22-5	8.13	3.00	4.88	5.70	25	1-1/2	1-1/4	2400	2500	3000
M5151C751NMZQ25-5	8.38	3.25	5.00	6.43	27	1-1/2	1-1/4	2400	2500	3000
M5151C751NMZQ27-5	8.63	3.50	5.13	7.07	30	1-1/2	1-1/4	2400	2500	2500



Permco is a leading manufacturer of high-pressure hydraulic gear/vane pumps and motors, flow dividers, intensifiers, and accessories. Available in a wide variety of sizes and configurations to suit your application needs.

# DDKS.com

## INDUSTRIES

### 586-323-5909



With Permco, it's personal

[www.permco.com](http://www.permco.com)



Permco USA | 1500 Frost Road | P. O. Box 2068 | Streetsboro, Ohio 44241



NFA  
Solutions through  
motion technology



Member